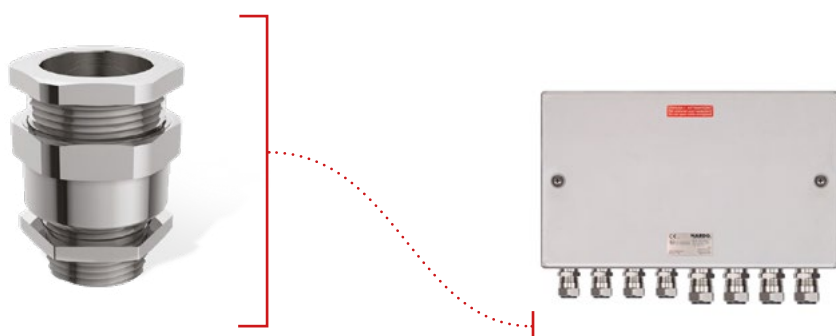


HCG1 series for zones 1/2 and 21/22

Steel glands for unarmoured cables

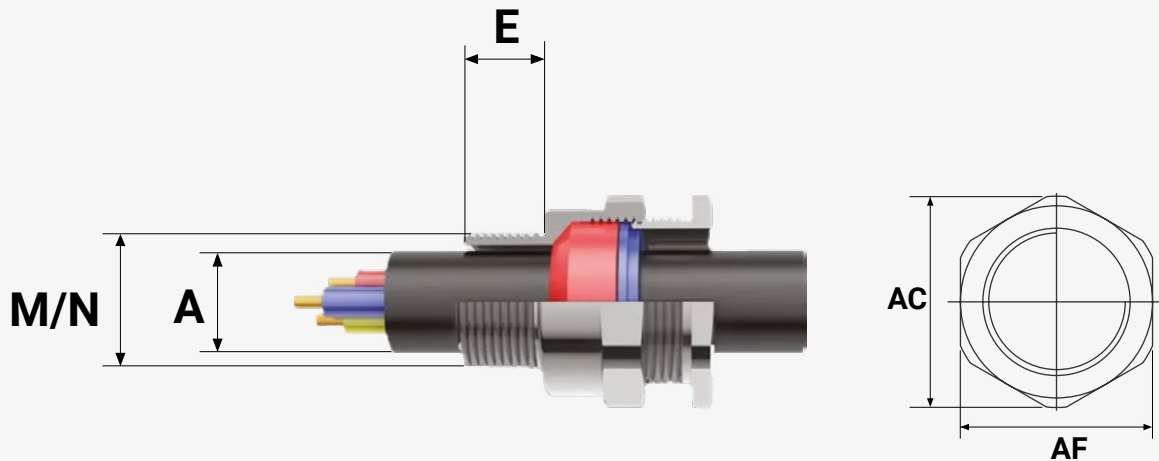
HARDO's HCG1 Series certified cable glands are designed for the installation of unarmoured cables in explosion hazard zones 1, 2 and 21 and 22. The silicone cable seal provides a high degree of protection IP68 (immersion up to 1.5 m for 30 min) and allows operation in a wide temperature range from -55°C to +160°C. HCG1 cable glands can be used with all types of unarmoured cables with a round cross-section.



Technical data

Marking according to 2014/34/EU	Ex II 2 GD Ex db IIC Gb II 2 GD Ex eb IIC Gb Ex II 2 GD Ex tb IIIC Db
ATEX zones	gases: 1/2 dusts: 21/22
EC type examination certificate	DNV 22 ATEX 53555X
IECEx certificate of conformity	IECEx DNV 22.0086X
IECEx marking	Ex db IIC Gb Ex eb IIC Gb Ex tb IIIC Db
Type of protection	Ex d, Ex e, Ex t
Ambient temperature	-55°C to +160°C (silicone seal)
Cable type	unarmoured
Degree of protection	IP66 / IP68 (1.5 m, 2 hours)
Thread type	Metric / NPT
Material	Brass Nickel-plated brass Stainless steel 316L

HCG1 series unarmoured cable glands



METRIC			NPT					A Outer clamping Ø		AF/AC**	Order code <small>Replace [X] with the value from the table below; select M1 or N1.</small>
M	E	N	N*		E	Min.	Max.				
Thread size	Thread length	Thread size	Thread size		Thread length						
M20	[1M]	17	1½"	[1N]	¾"	[2N]	20	3.2	8.5	25 / 27,5	HCG1 [X][1M/1N/2N]20XS
M20	[1M]	17	1½"	[1N]	¾"	[2N]	20	6.2	11.6	25 / 27,5	HCG1 [X][1M/1N/2N]20S
M20	[1M]	17	1½"	[1N]	¾"	[2N]	20	8.0	13.9	27 / 30	HCG1 [X][1M/1N/2N]20
M25	[2M]	17	¾"	[2N]	1"	[3N]	21	11.2	19.6	36 / 40	HCG1 [X][2M/2N/3N]25
M32	[3M]	17	1"	[3N]	1 ¼"	[4N]	26	17.1	26.0	42 / 46	HCG1 [X][3M/3N/4N]32
M40	[4M]	17	1 ¼"	[4N]	1 ½"	[5N]	26	23.6	31.6	50 / 55	HCG1 [X][4M/4N/5N]40
M50	[5M]	17	1 ½"	[5N]	2"	[6N]	26	31.1	37.5	55 / 60	HCG1 [X][5M/5N/6N]50S
M50	[5M]	17	2"	[5N]	2 ½"	[6N]	27	35.7	43.1	60 or 61 / 65	HCG1 [X][5M/5N/6N]50
M63	[6M]	17	2"	[6N]	2 ½"	[7N]	27	41.6	48.7	70 / 77	HCG1 [X][6M/6N/7N]63S
M63	[6M]	17	2 ½"	[6N]	3"	[7N]	40	47.3	55.2	74 / 81	HCG1 [X][6M/6N/7N]63
M75	[7M]	17	2 ½"	[7N]	3"	[8N]	40	54.1	61.2	80 / 87	HCG1 [X][7M/7N/8N]75S
M75	[7M]	17	3"	[8N]	3 ½"	[9N]	42	61.2	67.2	85 or 91 / 93 or 98.5	HCG1 [X][7M/8N/9N]75
M90	[9M]	24	3 ½"	[9N]	4"	---	---	66.7	79.2	108 / 116	HCG1 [X][9M/9N]90

* Optional thread size - available on special order**AF - ACROSS FLATS (distance between flat surfaces of hex bolt) / AC - ACROSS CORNERS (distance between opposite corners of hex bolt)

[X] Material

N - nickel-plated brass

S - 316L stainless steel

B - brass

Coding

Options to choose

CODE HARDO	CABLE TYPE	MATERIAL	THREAD Select one of the options			CLAMPING RANGE
			METRIC	NPT	NPT Option	
HCG	[1] = UNARMoured CABLES [2] = ARMoured CABLES*	[N] = NICKEL-PLATED BRASS [S] = 316L STAINLESS STEEL [B] = BRASS	[1M] M20	[1N] 1/2"	[2N] 3/4"	20XS
			[1M] M20	[1N] 1/2"	[2N] 3/4"	20S
			[1M] M20	[1N] 1/2"	[2N] 3/4"	20
			[2M] M25	[2N] 3/4"	[3N] 1"	25
			[3M] M32	[3N] 1"	[4N] 1 1/4"	32
			[4M] M40	[4N] 1 1/4"	[5N] 1 1/2"	40
			[5M] M50	[5N] 1 1/2"	[6N] 2"	50S
			[5M] M50	[5N] 2"	[6N] 2 1/2"	50
			[6M] M63	[6N] 2"	[7N] 2 1/2"	63S
			[6M] M63	[6N] 2 1/2"	[7N] 3"	63
			[7M] M75	[7N] 2 1/2"	[8N] 3"	75S
			[7M] M75	[8N] 3"	[9N] 3 1/2"	75
			[9M] M90	[9N] 3 1/2"	---	90

* To select glands for armored cables, please use the dedicated catalog card.

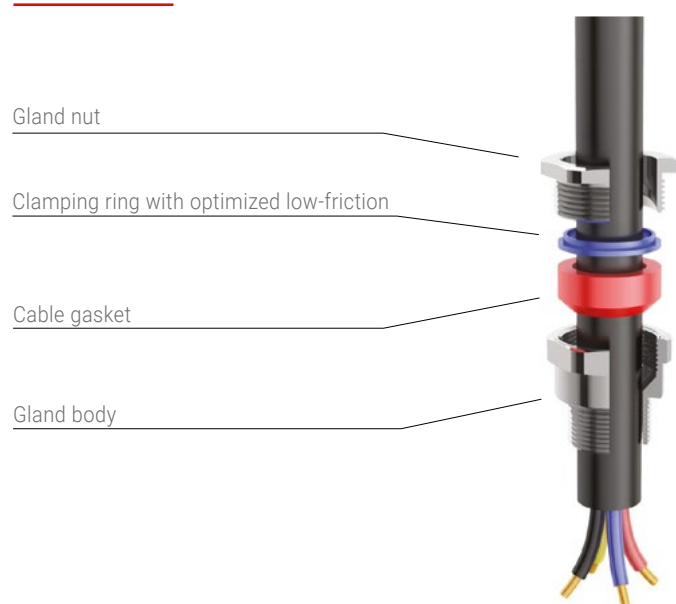
Thread and gland size must be selected from the same row

Example

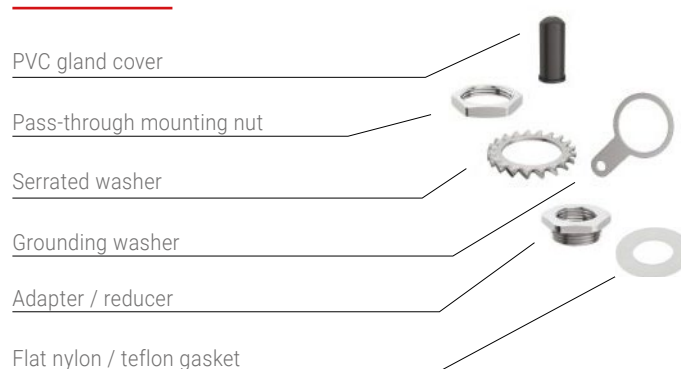


Construction and accessories

Construction



Accessories



NPT threads are self-sealing and therefore do not require the use of gaskets.



HCG2 series for zones 1/2 and 21/22

Steel glands for armoured/screened cables with double sealing



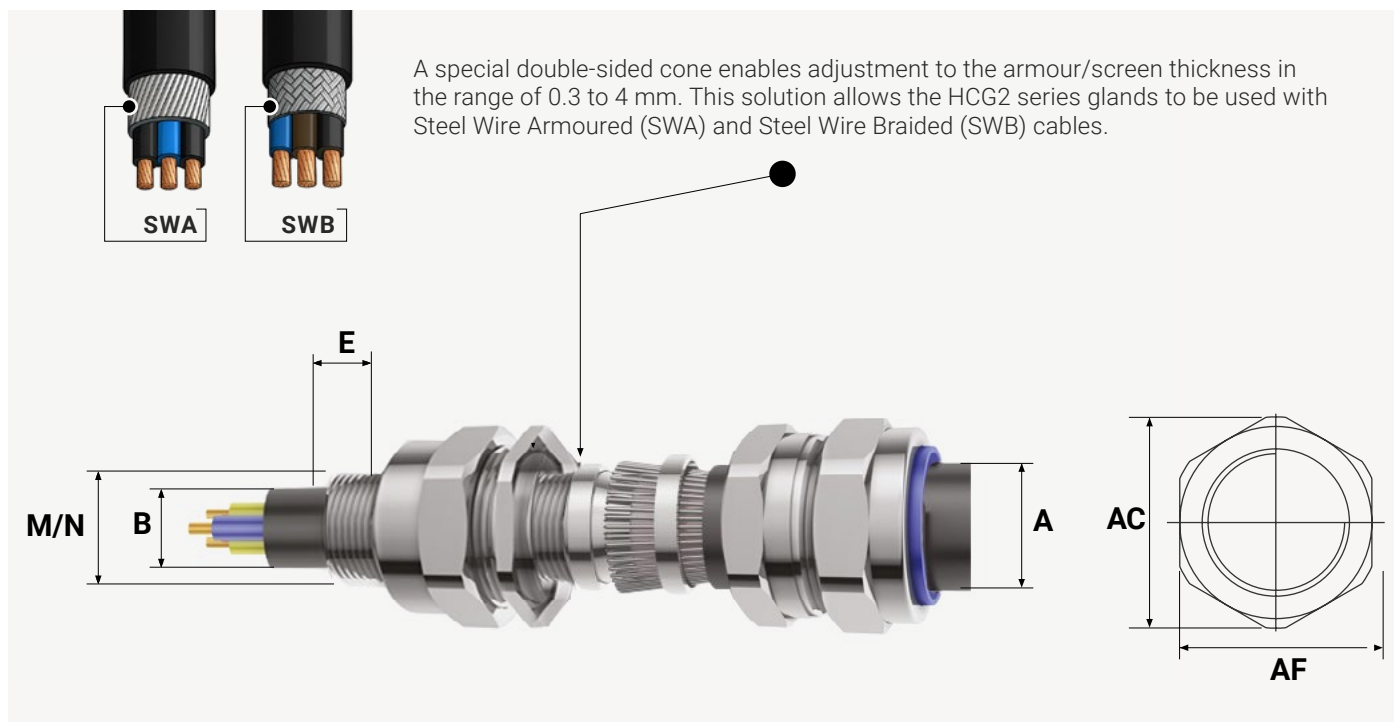
Certified HARDO cable glands HCG2 series are designed for armoured cables in zones 1, 2, 21 and 22. The double-sided cone clamps the armour, allowing the installation of SWA (Steel Wire Armoured) and SWB (Steel Wire Braided) cables. Double sealing of the cable allows to achieve IP68 protection (immersion up to 1.5 m for 30 minutes). HCG2 cable glands can be used in the temperature range from -55°C to +160°C (silicone sealing).



Technical data

Marking according to 2014/34/EU	Ex II 2 GD Ex db IIC Gb II 2 GD Ex eb IIC Gb Ex II 2 GD Ex tb IIIC Db
ATEX zones	gases: 1/2 dusts: 21/22
EC type examination certificate	DNV 22 ATEX 53555X
IECEx certificate of conformity	IECEx DNV 22.0086X
IECEx marking	Ex db IIC Gb Ex eb IIC Gb Ex tb IIIC Db
Type of protection	Ex d, Ex e, Ex t
Ambient temperature	-55°C to +160°C (silicone seal)
Cable type	armoured
Degree of protection	IP66 / IP68 (1.5 m, 2 hours)
Thread type	Metric / NPT
Material	Brass Nickel-plated brass Stainless steel 316L

HCG2 series glands for armored cables



METRIC			NPT					A Outer clamping Ø		B Inner. clamping Ø		Armour thickness**				AF/AC***	Order code Replace [X] with the value from the table below; select M1, N1 or N2
												Grooved cone		Graduated cone			
M	E		N		N*		E	Min.	Max.	Min.	Max.	Min.	Max.	Min.	Max.		
Thread size	Thread length		Thread size		Thread size		Thread length										
M20	[1M]	17	1/2"	[1N]	3/4"	[2N]	20	6.2	13.1	3.2	8.5	0.3	1	0.8	1.25	25 / 27,5	HCG2 [X][1M/1N/2N]20XS
M20	[1M]	17	1/2"	[1N]	3/4"	[2N]	20	9.6	15.5	6.2	11.6	0.3	1	0.8	1.25	25 / 27,5	HCG2 [X][1M/1N/2N]20S
M20	[1M]	17	1/2"	[1N]	3/4"	[2N]	20	12.5	20.9	8.0	13.9	0.4	1	0.8	1.25	31 / 34	HCG2 [X][1M/1N/2N]20
M25	[2M]	17	3/4"	[2N]	1"	[3N]	21	14.0	21.5	11.2	19.6	0.4	1.2	1.25	1.6	38 / 42	HCG2 [X][2M/2N/3N]25S
M25	[2M]	17	3/4"	[2N]	1"	[3N]	21	18.3	25.6	11.2	19.6	0.4	1.2	1.25	1.6	38 / 42	HCG2 [X][2M/2N/3N] 25
M32	[3M]	17	1"	[3N]	1 1/4"	[4N]	26	23.7	33.4	17.1	26.0	0.4	1.2	1.6	2	46 / 51	HCG2 [X][3M/3N/4N]32
M40	[4M]	17	1 1/4"	[4N]	1 1/2"	[5N]	26	28.0	39.5	22.1	31.6	0.4	1.6	1.6	2	55 / 60	HCG2 [X][4M/4N/5N]40
M50	[5M]	17	1 1/2"	[5N]	2"	[6N]	26	35.2	46.0	29.5	37.5	0.4	1.6	2	2.5	61 / 66,5	HCG2 [X][5M/5N/6N]50S
M50	[5M]	17	2"	[5N]	2 1/2"	[6N]	27	40.5	52.4	35.6	43.1	0.6	1.6	2	2.5	70 / 76	HCG2 [X][5M/5N/6N]50
M63	[6M]	17	2"	[6N]	2 1/2"	[7N]	27	45.6	58.5	40.1	48.7	0.6	1.6	2	2.5	75 / 83	HCG2 [X][6M/6N/7N]63S
M63	[6M]	17	2 1/2"	[6N]	3"	[7N]	40	54.6	64.5	47.2	55.2	0.6	1.6	2	2.5	80 / 89	HCG2 [X][6M/6N/7N]63
M75	[7M]	17	2 1/2"	[7N]	3"	[8N]	40	59.0	70.4	52.8	61.2	0.6	1.6	2	2.5	91 / 98,5	HCG2 [X][7M/7N/8N]75S
M75	[7M]	17	3"	[8N]	3 1/2"	[9N]	42	66.7	76.3	59.1	67.2	0.6	1.6	2.5	3	100 / 109	HCG2 [X][7M/8N/9N]75
M90	[8M]	24	3 1/2"	[9N]	---		44	76.2	87.2	66.6	79.2	0.8	1.6	3.15	4	114,5/124	HCG2 [X][8M/9N]90

* Optional thread size – available upon special request ** The armour clamping cone has two sides – depending on the mounting method, it allows for different armour clamping ranges *** AF – ACROSS FLATS (distance between the flat surfaces of a hexagonal screw) / AC – ACROSS CORNERS (distance between opposite corners of a hexagonal screw)

[X] Material

N - nickel-plated brass

S - 316L stainless steel

B - brass

Coding

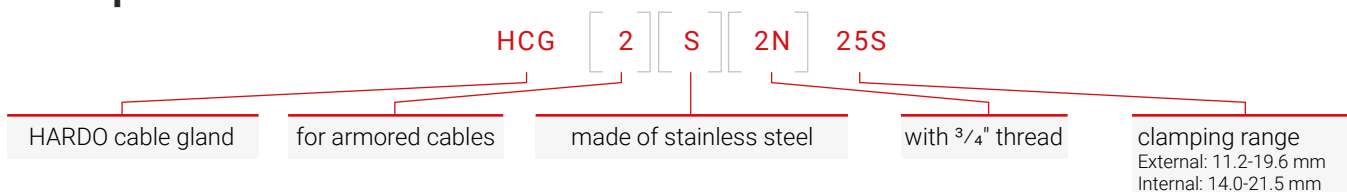
Options to choose

CODE HAR-DO	CABLE TYPE	MATERIAL	THREAD Select one of the options			CLAMPING RANGE
			METRIC	NPT	NPT Option	
HCG	[1] = UNREINFORCED CABLES* [2] = REINFORCED CABLES	[N] = NICKEL-PLATED BRASS [S] = 316L STAINLESS STEEL [B] = BRASS	[1M] M20	[1N] 1/2"	[2N] 3/4"	20XS
			[1M] M20	[1N] 1/2"	[2N] 3/4"	20S
			[1M] M20	[1N] 1/2"	[2N] 3/4"	20
			[2M] M25	[2N] 3/4"	[3N] 1"	25S
			[2M] M25	[2N] 3/4"	[3N] 1"	25
			[3M] M32	[3N] 1"	[4N] 1 1/4"	32
			[4M] M40	[4N] 1 1/4"	[5N] 1 1/2"	40
			[5M] M50	[5N] 1 1/2"	[6N] 2"	50S
			[5M] M50	[5N] 2"	[6N] 2 1/2"	50
			[6M] M63	[6N] 2"	[7N] 2 1/2"	63S
			[6M] M63	[6N] 2 1/2"	[7N] 3"	63
			[7M] M75	[7N] 2 1/2"	[8N] 3"	75S
			[7M] M75	[8N] 3"	[9N] 3 1/2"	75
			[8M] M90	[9N] 3 1/2"	---	90

* To select glands for unarmoured cables, please use the dedicated catalogue card.

Thread and gland size must be selected from the same row

Example



Construction and accessories

Construction

Gland nut

Clamping ring with optimized low-friction

Cable gasket - external

Intermediate body A

Clamping ring with optimized low-friction

Double-sided pressure cone

Intermediate body B

Clamping ring with optimized low-friction

Cable seal - inner

Gland body

O-Ring / flat gasket in nylon or teflon (NPT threads are self-sealing)



Accessories

PVC gland cover

Pass-through mounting nut

Serrated washer

Grounding washer

Adapter / reducer

Flat nylon / teflon gasket



NPT1 threads are self-sealing and therefore do not require the use of gaskets.



HAD/HAR/HPLG series for zones 1/2 and 21/22

Adapters/reducers/plugs for hazardous areas



Features

- ▶ Adapters, reducers and blanking plugs designed for hazardous areas (IECEx and ATEX certified). They can be used in zones 1, 2 (gases) and 21, 22 (dust).
- ▶ With an IP68 degree of protection, they provide a high level of protection against the ingress of dust and moisture.
- ▶ Made of brass (CuZn39Pb3) or stainless steel (SS304/SS316L), they have high corrosion resistance, making them ideal for use in harsh industrial environments.
- ▶ Versions with metric-metric, metric-NPT, NPT-NPT and NPT-metric threads are available, providing installation flexibility.
- ▶ The thread range from M16 to M100 guarantees compatibility with a variety of cable glands and housings.
- ▶ An operating temperature range of -55°C to +160°C allows use in extreme conditions.

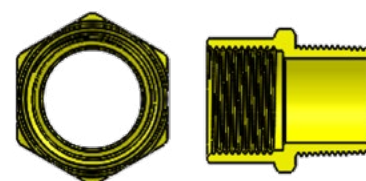
Technical data

Marking in accordance with 2014/34/EU	Ex II 2 GD Ex db IIC Gb Ex II 2 GD Ex eb IIC Gb Ex II 2 GD Ex tb IIIC Db
EC type examination certificate	DNV 22 ATEX 62580X
IECEx certificate of conformity	IECEx DNV 22.0091X
IECEx Marking	Ex db IIC Gb Ex eb IIC Gb Ex tb IIIC Db
Type of protection	Ex d, Ex e, Ex t
Permissible ambient temperature	-55°C to +160°C
Degree of protection	IP66 / IP68 (1.5 m, 2 h)
Material	Brass (CuZn39Pb3) Stainless steel (316l) Nickel-plated brass (CuZn39Pb3)*

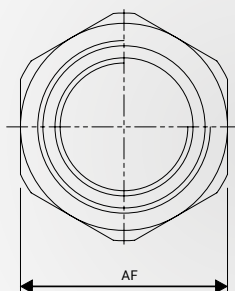
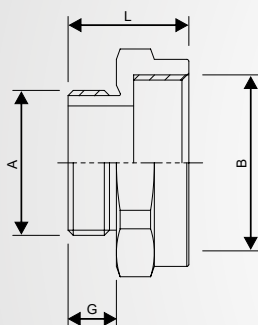
* Available by special order only

Application

HARDO adapters and reducers are widely used in the oil and gas industry, chemical industry and heavy machinery sector where explosion protection is required. Thanks to their high mechanical strength and precision threading, they provide a safe and tight connection.



HAD series for zones 1/2 and 21/22

Adapters for cable glands

IEC IECEx Ex IP68 CE

Metric-metric

A	B	L	AF	G	Order No
M16	M20	34	25	16	HAD0M1M[X]
M16	M25	34	30	16	HAD0M2M[X]
M20	M20	34	25	16	HAD1M1M[X]
M20	M25	34	30	16	HAD1M2M[X]
M20	M32	34	36	16	HAD1M3M[X]
M25	M25	34	30	16	HAD2M2M[X]
M25	M32	34	36	16	HAD2M3M[X]
M25	M40	34	45	16	HAD2M4M[X]
M25	M50	34	55	16	HAD2M5M[X]
M32	M32	34	36	16	HAD3M3M[X]
M32	M40	34	45	16	HAD3M4M[X]
M32	M50	34	55	16	HAD3M5M[X]
M40	M40	34	45	16	HAD4M4M[X]
M40	M50	34	55	16	HAD4M5M[X]
M40	M63	34	68	16	HAD4M6M[X]
M40	M75	39	80	16	HAD4M7M[X]
M50	M50	34	55	16	HAD5M5M[X]
M50	M63	36	68	16	HAD5M6M[X]
M50	M75	39	80	16	HAD5M7M[X]
M63	M63	34	68	16	HAD6M6M[X]
M63	M75	39	80	16	HAD6M7M[X]
M63	M90	39	95	16	HAD6M8M[X]
M75	M75	44	80	20	HAD7M7M[X]
M75	M90	44	95	20	HAD7M8M[X]
M75	M100	44	105	20	HAD7M9M[X]
M90	M90	44	95	20	HAD8M8M[X]

Metric-NPT

A	B	L	AF	G	Order No
M16	3/8"	34	20	16	HAD0M0N[X]
M16	1/2"	37	25	16	HAD0M1N[X]
M16	3/4"	37	30	16	HAD0M2N[X]
M20	1/2"	37	25	16	HAD1M1N[X]
M20	3/4"	37	30	16	HAD1M2N[X]
M20	1"	41	36	16	HAD1M3N[X]
M25	3/4"	37	30	16	HAD2M2N[X]
M25	1"	41	36	16	HAD2M3N[X]
M25	1.1/4"	41	45	16	HAD2M4N[X]
M32	1"	41	36	16	HAD3M3N[X]
M32	1.1/4"	41	45	16	HAD3M4N[X]
M32	1.1/2"	43	55	16	HAD3M5N[X]
M40	1.1/4"	41	45	16	HAD4M4N[X]
M40	1.1/2"	43	55	16	HAD4M5N[X]
M40	2"	43	65	16	HAD4M6N[X]
M50	1.1/2"	43	55	16	HAD5M5N[X]
M50	2"	43	65	16	HAD5M6N[X]
M50	2.1/2"	47	80	16	HAD5M6N[X]
M63	2"	43	68	16	HAD6M6N[X]
M63	2.1/2"	47	80	16	HAD6M6N[X]
M63	3"	47	95	16	HAD6M8N[X]
M75	2.1/2"	52	80	20	HAD7M6N[X]
M75	3"	52	95	20	HAD7M8N[X]
M75	4"	54	120	20	HAD7M9N[X]
M90	3"	52	95	20	HAD8M8N[X]
M90	4"	54	120	20	HAD8M9N[X]
M100	4"	54	120	20	HAD9M9N[X]

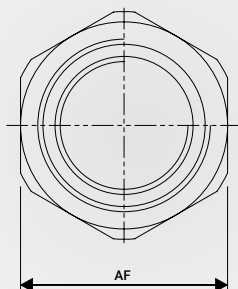
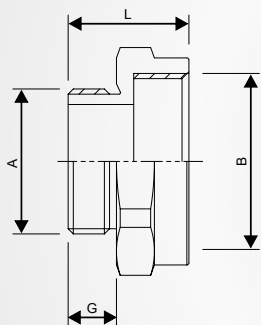
[X] Material

N - nickel-plated brass

S - 316L stainless steel

B - brass

HAD series for zones 1/2 and 21/22

Adapters for cable glands

IEC IECEx Ex IP68 CE

NPT-metric

A	B	L	AF	G	Order number
3/8"	M16	33	25	16	HAD0N0M[X]
3/8"	M20	33	25	16	HAD0N1M[X]
1/2"	M20	38	25	21	HAD1N1M[X]
1/2"	M25	39	30	21	HAD1N2M[X]
1/2"	M32	39	36	21	HAD1N3M[X]
3/4"	M25	39	30	21	HAD2N2M[X]
3/4"	M32	39	36	21	HAD2N3M[X]
3/4"	M40	39	45	21	HAD2N4M[X]
1"	M32	44	36	26	HAD3N3M[X]
1"	M40	44	45	26	HAD3N4M[X]
1"	M40	44	55	26	HAD3N4M[X]
1.1/4"	M40	44	45	26	HAD4N4M[X]
1.1/4"	M50	44	55	26	HAD4N5M[X]
1.1/4"	M63	44	68	26	HAD4N6M[X]
1.1/2"	M50	45	55	27	HAD5N5M[X]
1.1/2"	M63	45	68	27	HAD5N6M[X]
1.1/2"	M75	50	80	27	HAD5N7M[X]
2"	M63	48	68	28	HAD6N6M[X]
2"	M75	51	80	28	HAD6N7M[X]
2"	M90	51	95	28	HAD6N8M[X]
2.1/2"	M75	65	80	41	HAD6N7M[X]
2.1/2"	M90	65	95	41	HAD6N8M[X]
2.1/2"	M100	66	105	41	HAD6N9M[X]
3"	M90	66	95	42	HAD8N8M[X]
3"	M100	66	105	42	HAD8N9M[X]
4"	M100	70	120	45	HAD9N9M[X]

NPT-NPT

A	B	L	AF	G	Order number
3/8"	1/2"	37	25	16	HAD0N1N[X]
3/8"	3/4"	42	30	21	HAD0N2N[X]
1/2"	1/2"	42	36	21	HAD1N1N[X]
1/2"	3/4"	42	36	21	HAD1N2N[X]
3/4"	3/4"	42	45	21	HAD2N2N[X]
3/4"	1"	46	45	21	HAD2N3N[X]
1"	1"	51	45	26	HAD3N3N[X]
1"	1.1/4"	51	55	26	HAD3N4N[X]
1"	1.1/2"	53	55	26	HAD3N5N[X]
1.1/4"	1.1/4"	51	55	26	HAD4N4N[X]
1.1/4"	1.1/2"	53	55	26	HAD4N5N[X]
1.1/4"	2"	53	68	26	HAD4N6N[X]
1.1/2"	1.1/2"	54	68	27	HAD5N5N[X]
1.1/2"	2"	54	68	27	HAD5N6N[X]
1.1/2"	2.1/2"	58	68	27	HAD5N6N[X]
2"	2"	55	80	28	HAD6N6N[X]
2"	2.1/2"	59	80	28	HAD6N6N[X]
2"	3"	59	80	28	HAD6N8N[X]
2.1/2"	2.1/2"	73	80	41	HAD6N6N[X]
2.1/2"	3"	73	80	41	HAD6N8N[X]
2.1/2"	4"	73	95	41	HAD6N9N[X]
3"	3"	74	95	42	HAD8N8N[X]
3"	4"	74	120	42	HAD8N9N[X]

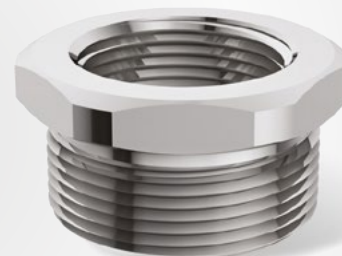
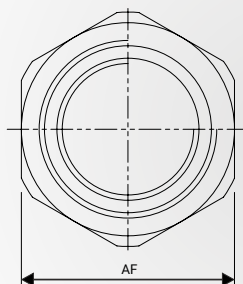
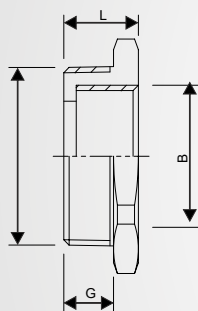
[X] Material

N - nickel-plated brass

S - 316L stainless steel

B - brass

HAR series for zones 1/2 and 21/22

Reducers for cable glands

IEC IECEx Ex IP68 CE

Metric-metric

A	B	L	AF	G	Order No
M20	M12	22	25	16	HRD1MMS[X]
M20	M16	22	25	16	HRD1M0M[X]
M25	M12	22	30	16	HRD2MMS[X]
M25	M16	22	30	16	HRD2M0M[X]
M25	M20	22	30	16	HRD2M1M[X]
M32	M16	22	36	16	HRD3M0M[X]
M32	M20	22	36	16	HRD3M1M[X]
M32	M25	22	36	16	HRD3M2M[X]
M40	M20	22	45	16	HRD4M1M[X]
M40	M25	22	45	16	HRD4M2M[X]
M40	M32	22	45	16	HRD4M3M[X]
M50	M20	24	55	16	HRD5M1M[X]
M50	M25	24	55	16	HRD5M2M[X]
M50	M32	24	55	16	HRD5M3M[X]
M50	M40	24	55	16	HRD5M4M[X]
M63	M50	24	68	16	HRD6M5M[X]
M63	M25	24	68	16	HRD6M2M[X]
M63	M32	24	68	16	HRD6M3M[X]
M63	M40	24	68	16	HRD6M4M[X]
M63	M50	24	68	16	HRD6M5M[X]
M75	M63	28	80	20	HRD7M6M[X]
M75	M32	28	80	20	HRD7M3M[X]
M75	M40	28	80	20	HRD7M4M[X]
M75	M50	28	80	20	HRD7M5M[X]
M75	M63	28	80	20	HRD7M6M[X]
M90	M32	28	95	20	HRD8M3M[X]
M90	M40	28	95	20	HRD8M4M[X]
M90	M50	28	95	20	HRD8M5M[X]
M90	M63	28	95	20	HRD8M6M[X]
M90	M75	28	95	20	HRD8M7M[X]
M100	M40	30	110	20	HRD9M4M[X]
M100	M50	30	110	20	HRD9M5M[X]
M100	M63	30	110	20	HRD9M6M[X]
M100	M75	30	110	20	HRD9M7M[X]
M100	M90	30	110	20	HRD9M8M[X]

Metric-NPT

A	B	L	A/F	G	Order No
M20	3/8"	22	25	16	HRD1M0N[X]
M25	3/8"	22	30	16	HRD2M0N[X]
M25	1/2"	22	30	16	HRD2M1N[X]
M32	1/2"	22	36	16	HRD3M1N[X]
M32	3/4"	22	36	16	HRD3M2N[X]
M40	1/2"	22	45	16	HRD4M1N[X]
M40	3/4"	22	45	16	HRD4M2N[X]
M40	1"	22	45	16	HRD4M3N[X]
M50	1/2"	22	55	16	HRD5M1N[X]
M50	3/4"	22	55	16	HRD5M2N[X]
M50	1"	22	55	16	HRD5M3N[X]
M50	1 1/4"	22	55	16	HRD5M4N[X]
M63	3/4"	22	68	16	HRD6M2N[X]
M63	1"	22	68	16	HRD6M3N[X]
M63	1 1/4"	22	68	16	HRD6M4N[X]
M63	1 1/2"	22	68	16	HRD6M5N[X]
M75	1"	28	80	20	HRD7M3N[X]
M75	1 1/4"	28	80	20	HRD7M4N[X]
M75	1 1/2"	28	80	20	HRD7M5N[X]
M75	2"	28	80	20	HRD7M6N[X]
M90	1"	28	95	20	HRD8M3N[X]
M90	1 1/4"	28	95	20	HRD8M4N[X]
M90	1 1/2"	28	95	20	HRD8M5N[X]
M90	2"	28	95	20	HRD8M6N[X]
M90	2 1/2"	28	95	20	HRD8M6N[X]
M100	1 1/4"	32	110	22	HRD9M4N[X]
M100	1 1/2"	32	110	22	HRD9M5N[X]
M100	2"	32	110	22	HRD9M6N[X]
M100	2 1/2"	32	110	22	HRD9M6N[X]
M100	3"	32	110	22	HRD9M8N[X]

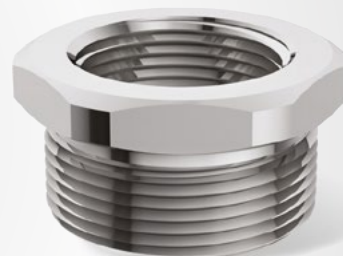
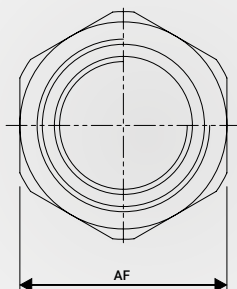
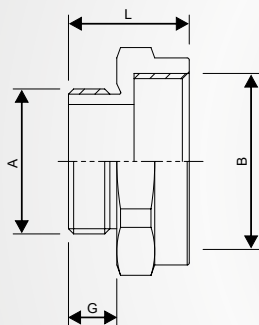
[X] Material

N - nickel-plated brass

S - 316L stainless steel

B - brass

HAR series for zones 1/2 and 21/22

Reducers for cable glands

NPT-metric

A	B	L	A/F	G	Order No
3/8"	M12	22	20	16	HRD0NMS[X]
1/2"	M12	27	25	21	HRD1NMS[X]
1/2"	M16	27	25	21	HRD1N0M[X]
3/4"	M12	27	30	21	HRD2NMS[X]
3/4"	M16	27	30	21	HRD2N0M[X]
3/4"	M20	27	30	21	HRD2N1M[X]
1"	M12	32	36	26	HRD3NMS[X]
1"	M16	32	36	26	HRD3N0M[X]
1"	M20	32	36	26	HRD3N1M[X]
1"	M25	32	36	26	HRD3N2M[X]
1 1/4"	M12	32	45	26	HRD4NMS[X]
1 1/4"	M16	32	45	26	HRD4N0M[X]
1 1/4"	M20	32	45	26	HRD4N1M[X]
1 1/4"	M25	32	45	26	HRD4N2M[X]
1 1/4"	M32	32	45	26	HRD4N3M[X]
1 1/2"	M20	35	55	27	HRD5N1M[X]
1 1/2"	M25	35	55	27	HRD5N2M[X]
1 1/2"	M32	35	55	27	HRD5N3M[X]
1 1/2"	M40	35	55	27	HRD5N4M[X]
2"	M25	36	68	28	HRD6N2M[X]
2"	M32	36	68	28	HRD6N3M[X]
2"	M40	36	68	28	HRD6N4M[X]
2"	M50	36	68	28	HRD6N5M[X]
2 1/2"	M32	51	80	41	HRD6N3M[X]
2 1/2"	M40	51	80	41	HRD6N4M[X]
2 1/2"	M50	51	80	41	HRD6N5M[X]
2 1/2"	M63	51	80	41	HRD6N6M[X]
3"	M32	54	95	42	HRD8N3M[X]
3"	M40	54	95	42	HRD8N4M[X]
3"	M50	54	95	42	HRD8N5M[X]
3"	M63	54	95	42	HRD8N6M[X]
3"	M75	54	95	42	HRD8N7M[X]
4"	M40	57	120	45	HRD9N4M[X]
4"	M50	57	120	45	HRD9N5M[X]
4"	M63	57	120	45	HRD9N6M[X]
4"	M75	57	120	45	HRD9N7M[X]
4"	M90	57	120	45	HRD9N8M[X]

NPT-NPT

A	B	L	AF	G	Order No
1/2"	3/8"	29	25	21	HRD1N0N[X]
3/4"	1/2"	29	30	21	HRD2N1N[X]
1"	1/2"	34	36	26	HRD3N1N[X]
1"	3/4"	34	36	26	HRD3N2N[X]
1 1/4"	1/2"	34	45	26	HRD4N1N[X]
1 1/4"	3/4"	34	45	26	HRD4N2N[X]
1 1/4"	1"	34	45	26	HRD4N3N[X]
1 1/2"	1/2"	35	55	27	HRD5N1N[X]
1 1/2"	3/4"	35	55	27	HRD5N2N[X]
1 1/2"	1"	35	55	27	HRD5N3N[X]
1 1/2"	1 1/4"	35	55	27	HRD5N4N[X]
2"	3/4"	36	68	28	HRD6N2N[X]
2"	1"	36	68	28	HRD6N3N[X]
2"	1 1/4"	36	68	28	HRD6N4N[X]
2"	1 1/2"	36	68	28	HRD6N5N[X]
2 1/2"	3/4"	51	80	41	HRD6N2N[X]
2 1/2"	1"	51	80	41	HRD6N3N[X]
2 1/2"	1 1/4"	51	80	41	HRD6N4N[X]
2 1/2"	1 1/2"	51	80	41	HRD6N5N[X]
2 1/2"	2"	51	80	41	HRD6N6N[X]
3"	1 1/4"	54	95	42	HRD8N4N[X]
3"	1 1/2"	54	95	42	HRD8N5N[X]
3"	2"	54	95	42	HRD8N6N[X]
3"	2 1/2"	54	95	42	HRD8N6N[X]
4"	1 1/2"	57	120	45	HRD9N5N[X]
4"	2"	57	120	45	HRD9N6N[X]
4"	2 1/2"	57	120	45	HRD9N6N[X]
4"	3"	57	120	45	HRD9N8N[X]

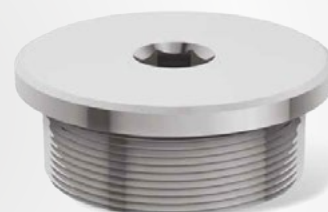
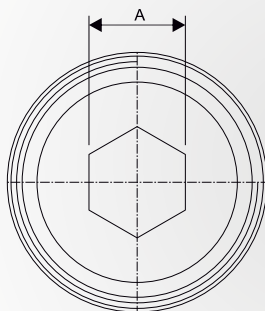
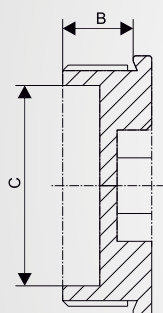
[X] Material

N - nickel-plated brass

S - 316L stainless steel

B - brass

HPLG series for zones 1/2 and 21/22

Plugs for cable glands

IEC IECEx Ex IP68 CE

Metric

B	A	B	C	Order No
M16	8.1	14	4	HPLG0M[x]
M20	8.1	14	6	HPLG1M[x]
M25	10.1	14	10	HPLG2M[x]
M32	10.1	14	15	HPLG3M[x]
M40	14.1	14	22	HPLG4M[x]
M50	14.1	14	30	HPLG5M[x]
M63	14.1	14	40	HPLG6M[x]
M75	14.1	14	53	HPLG7M[x]
M90	14.1	14	65	HPLG8M[x]

NPT

B	A	B	C	Order No
3/8"	8.1	14	4	HPLG0N[x]
1/2"	8.1	14	6	HPLG1N[x]
3/4"	10.1	14	10	HPLG2N[x]
1"	10.1	19	15	HPLG3N[x]
1 1/4"	14.1	19	22	HPLG4N[x]
1 1/2"	14.1	19	30	HPLG5N[x]
2"	14.1	19		HPLG6N[x]
2 1/2"	14.1	19	40	HPLG7N[x]
3"	14.1	24	53	HPLG8N[x]

[X] Material

N - nickel-plated brass

S - 316L stainless steel

B - brass